



 Ilewelyn-davies sahani

architecture + planning + design



 Ilewelyn-davies sahani

architecture + planning + design

5120 Woodway, Suite 8010
Houston, Texas 77056
USA

Tel : (713) 850 1500
Fax : (713) 850 1023
www.theldnet.com

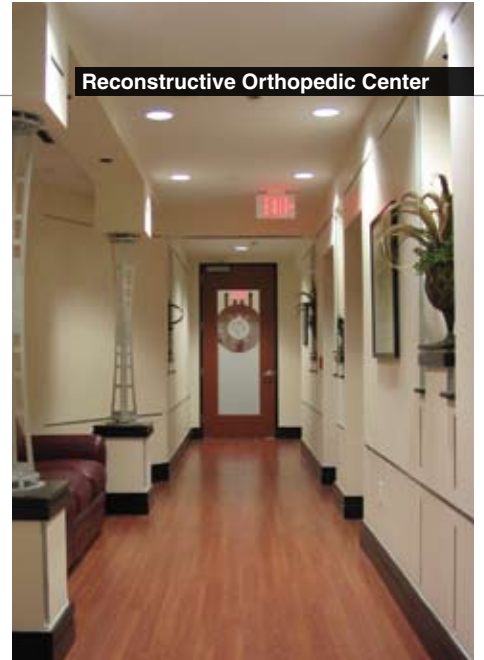
Interior Architecture

Llewelyn-Davies Sahni, Inc. (LDS) is an award winning Houston-based firm with extensive planning, urban design, architecture, interior architecture and development advisory experience.

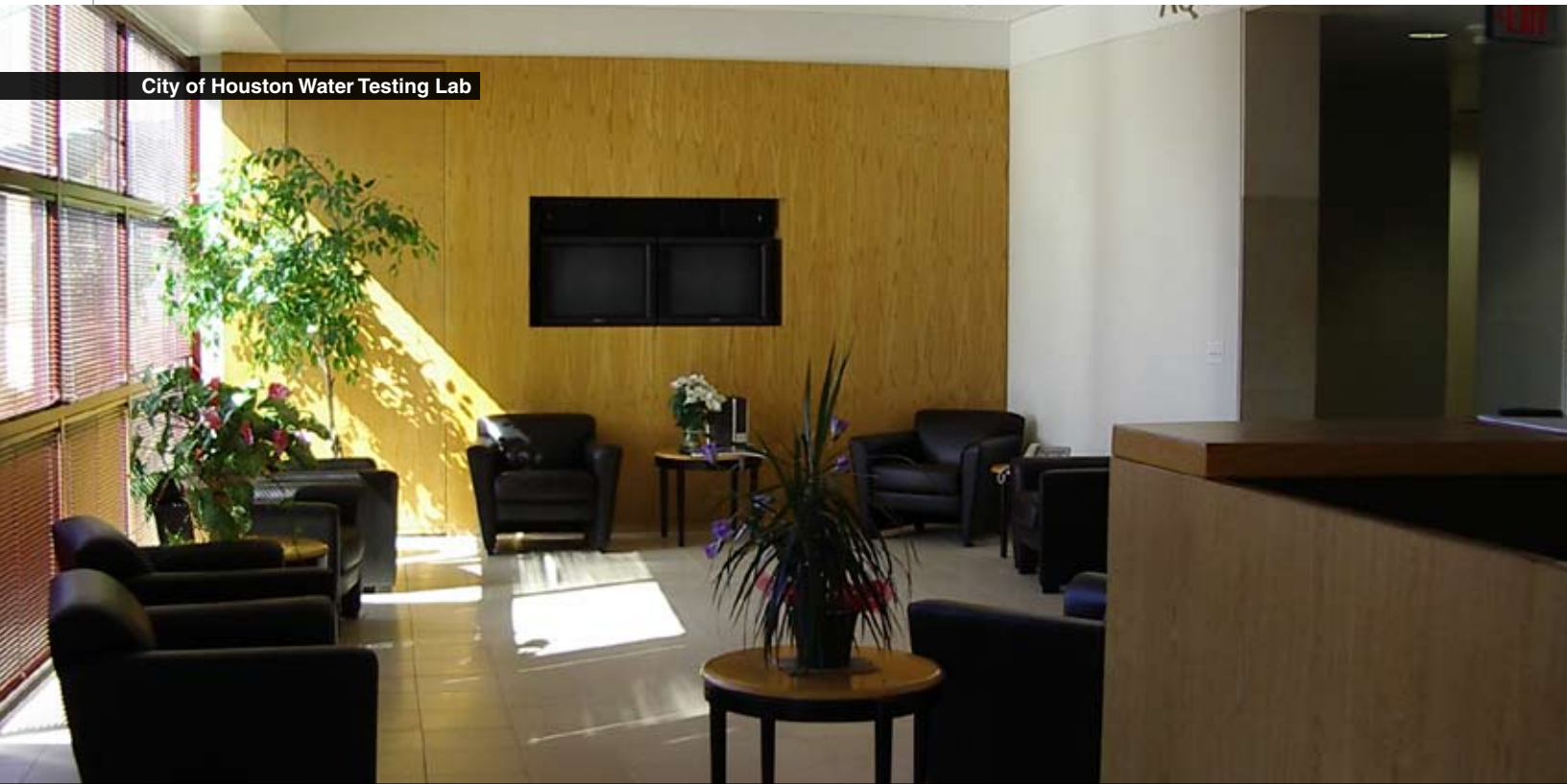
The firm has been in business for 31 years in Houston and 40 years in the United States, providing services throughout the US and overseas.

LDS offers complete interior design services, including the development of interiors budgets, space planning, interior architecture, interior design, selection of fixtures and furnishings, management of procurement for all levels of fixtures, furnishings and equipment and coordination of installations.

Our involvement in a broad range of services allows us to constantly evaluate, challenge, adjust and confirm concepts and standards typically utilized in interior architectural design. From conceptual design to schematic design to design development, the product is a design that is responsive to the needs of the users, current with technology and flexible toward change.



Reconstructive Orthopedic Center



City of Houston Water Testing Lab



Nathdwara Temple

Interior Architecture serves as a link between interior design and true architecture, incorporating structural and load bearing issues as well as the visual aspects of interior spaces.



Seven Acres Geriatric Center

Interior architecture is more than artistic design for interior spaces; it focuses on the architecture and construction of the interior built environment and conservation.

Facility Services include the following areas:

- Facilities Database
- Facilities Assessment
- Functional Space Utilization
- Facility Conversion and Adaptability Assessment
- Architectural Programming
- Generic and Prototype Area Guidelines
- Functional Guidelines
- Facilities Zoning
- Detailed Space Planning
- Room Data Sheet Development
- Equipment and Furnishing Standards
- Equipment Specification and Layout
- Building Design Review
- Value Analysis
- Code and ADA Compliance Assessment



Houston Eye Associates



LBJ Hospital



American First National Bank